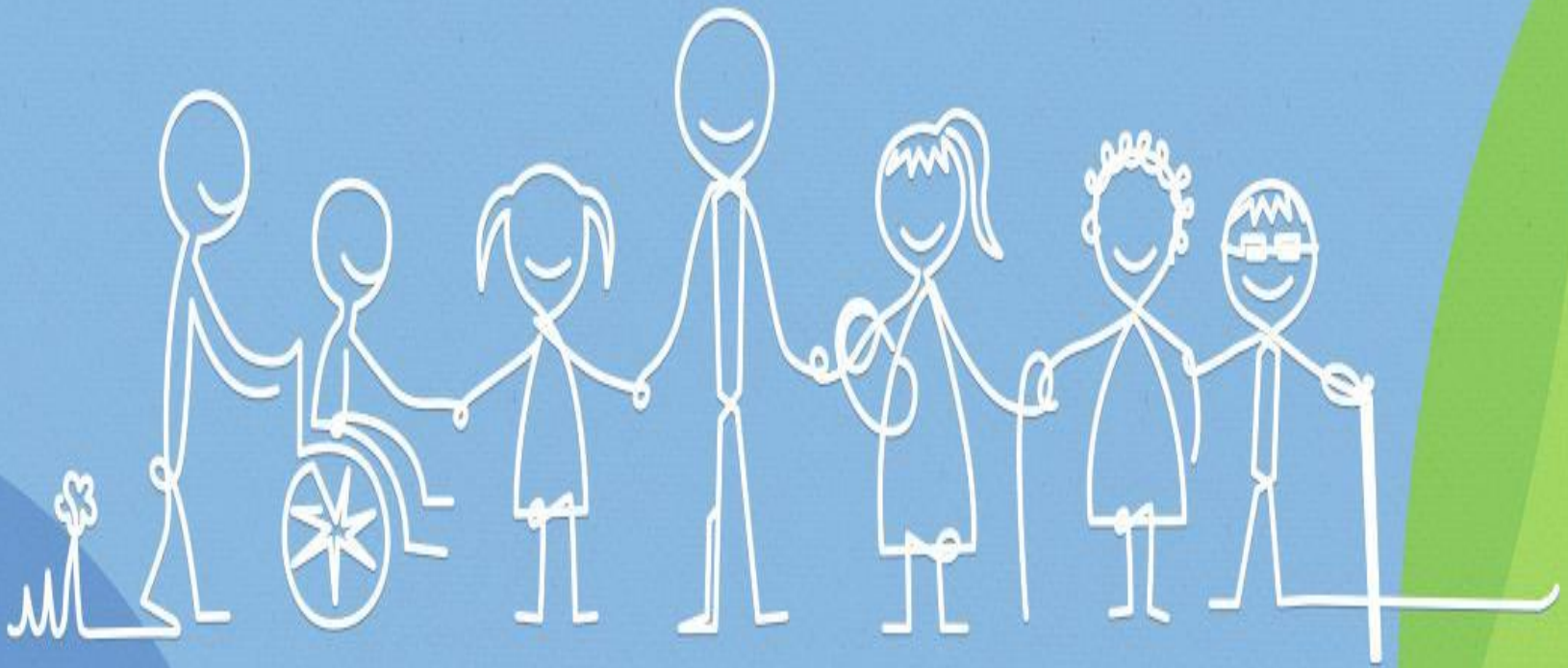


SG ENABLE

Inclusive society, Enabled lives.

Overview of the Grant



SG Enable

An Agency Dedicated to Enabling Persons with Disabilities

Inclusive Society. Enabled Lives.

SG ENABLE
Inclusive society, Enabled lives.

SG Enable's Vision: Inclusive Society, Enabled Lives

Empower

Persons with disabilities and caregivers via timely access to information referral services, grants and support

Enhance

employability and employment opportunities for persons with disabilities

Engage

family, community, stakeholders and public in enabling persons with disabilities as integral members of society

Tote Board's New Initiative

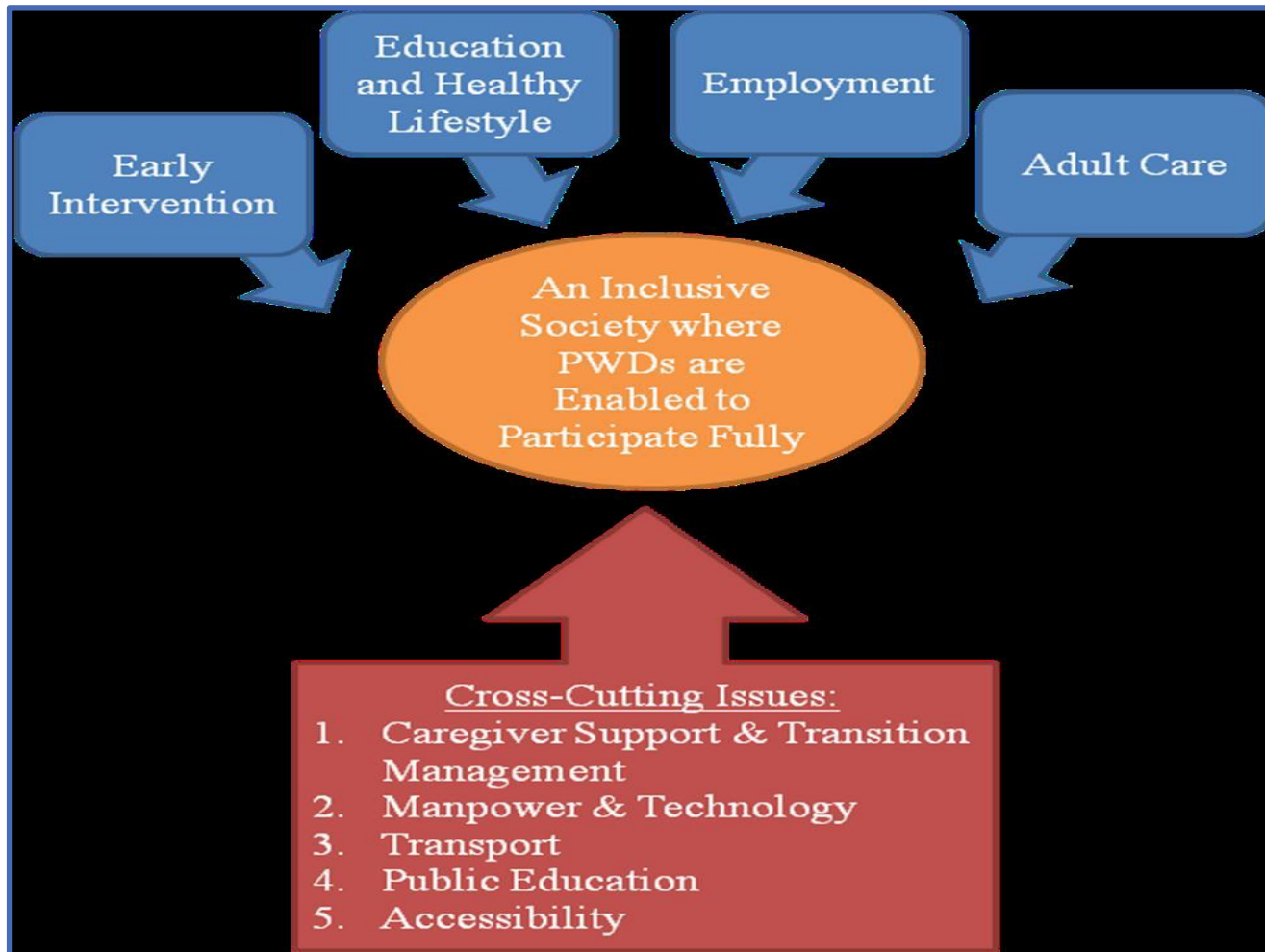
Tote Board aims to develop new Strategic Initiatives focused on specific areas of need and those that meet its Outcomes

First one aims to improve the quality of life of Persons with Disabilities and their Caregivers

In consultation with stakeholders, Tote Board has developed a new initiative: Tote Board- Enabling Lives Initiative

Lifecourse Approach

Enabling Master Plan (2012 – 2016)



Overview of Grant

Partners

- Tote Board – a Strategic Funder
- SG Enable – a Programme Partner
- Organisations – Programme Owners

Funding & Grant Calls

- 5 Year of Social Innovation Funding for the Disability Sector
- 8 Formal Grant Calls over 4 Years focused on the following areas:
 - Data & Technology
 - Caregiver and Natural Support
 - Transition Management

Characteristics of Grant



Shared Outcomes

Develop a shared vision for change including a common understanding of the problem and joint approach to solving it



Shared Measurement

Evidence-based programmes or initiatives. Data Collection and Results Management to ensure efforts remained aligned



Mutually Reinforcing Activities

Activities / Programmes can be differentiated while still being coordinated through a mutually reinforcing plan of action



Share Learnings

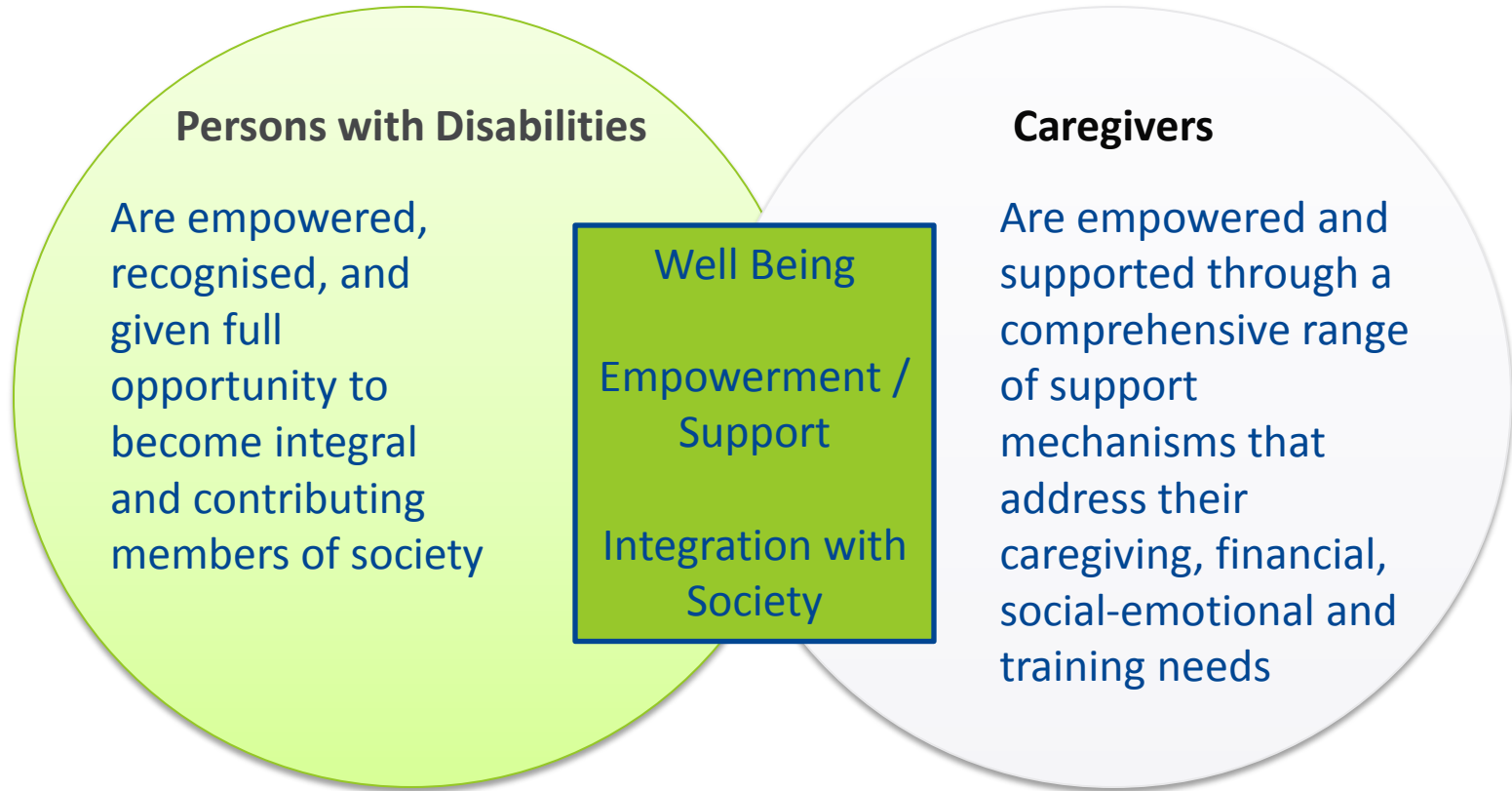
Make learning a regular and active process to encourage partners to exchange information, ideas and questions to seek continuous improvement



SG Enable as Programme Partner

Create and manage collective impact through coordinating participating organisations and agencies and supporting relevant activities

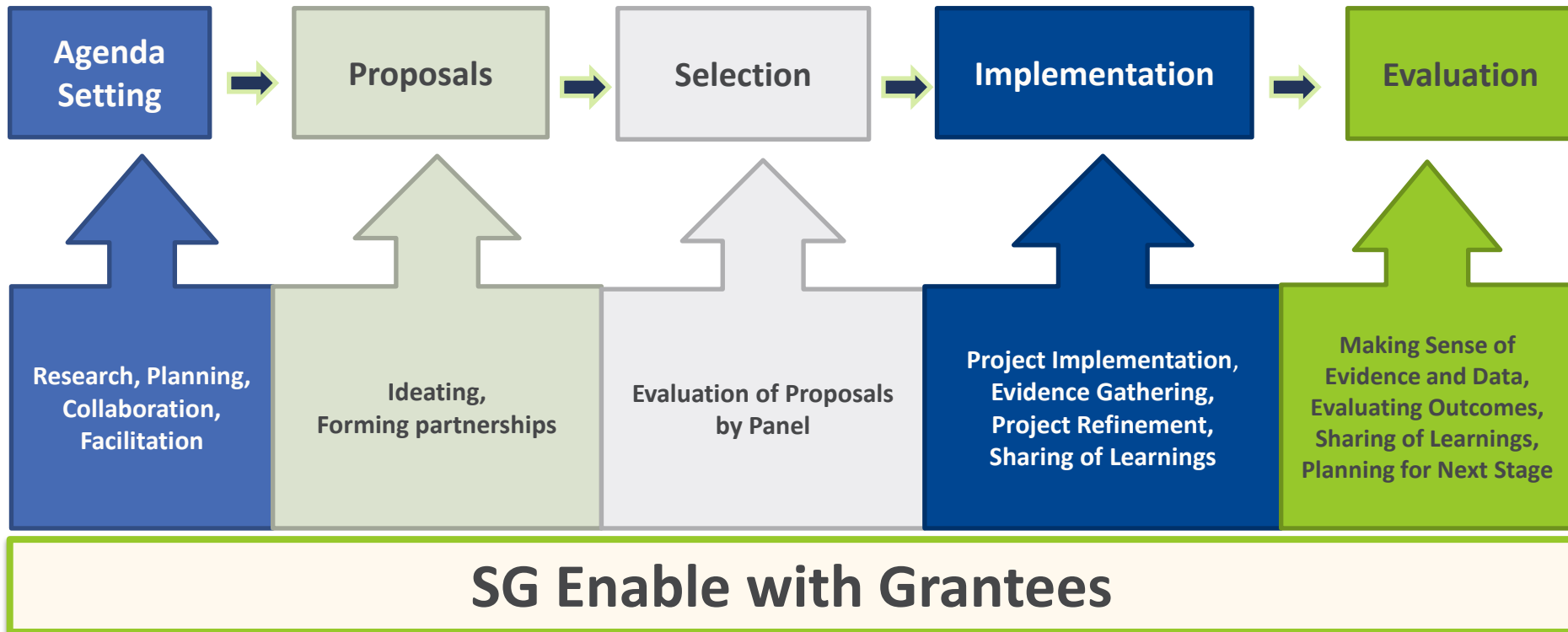
Common Shared Outcomes



Common Shared Outcomes

Areas	Persons with Disabilities	Caregivers
Well-being	Persons with disabilities experience increased psychological and emotional well-being.	Caregivers experience increased psychological and emotional well-being.
Empowerment / Support	Persons with disabilities improve in their life skills (i.e. independent living skills, functional skills etc.) as much as their potential allows.	Caregivers feel confident of their ability to provide competent care and support to persons with disabilities.
	Persons with disabilities (or their proxies) are able to make informed decisions and planning via better support and access to information, programme and product navigation.	Caregivers have greater access to support services, network and structure that sustain caregiving.
Integration with Society	Persons with disabilities have more opportunities to participate in social, family, economic and community life.	Caregivers have more opportunities to participate in social, family, economic and community life.

Grant Process



Project Guidelines (I)

Area	Criteria
Project Focus	<ul style="list-style-type: none">• Targeted at improving the wellbeing of persons with disabilities or their caregivers• Have well-defined goals and objectives to meet the shared outcomes
Target Beneficiaries	<ul style="list-style-type: none">• Persons with disabilities• Caregivers
Access to Project	<ul style="list-style-type: none">• Project/Programme must be open for all to access• If any fees are to be charged, they should be kept affordable and revenue from the fees must only go into cost recovery of expenses not covered by the grant

Project Guidelines (II)

Area	Criteria
Intellectual Property Rights	<ul style="list-style-type: none">• Grant applicants will own any intellectual (IP) rights and shall give access to the use of this IP at no cost to the Grant Programme Office bearers• For projects that terminate prematurely, the IP rights will reside with the Grant Programme Office for recycling purposes
Reporting and impact measurement	<ul style="list-style-type: none">• Willing to comply with the monitoring and reporting guidelines of the grant• Adhere to the minimum standards of service established for the project
Access to Project	<ul style="list-style-type: none">• Willing to share findings and / or recommendations arising from funded projects for shared learning purposes when necessary

Funding Guidelines

Eligibility

- Applicants
 - Community funding that is open to all VWOs, Charities, Non-Profit Organisations, Social Enterprises, Institutes of Higher Learning, Research Institutes.
 - Organisations that fall outside of this list can be considered on a case-by-case basis and would be required to partner a Voluntary Welfare Organisation to apply for the grant.
-
- Project Nature
 - Innovative ideas
 - Product or prototype development
 - New service models or programmes
 - Pilot programmes
 - Localisation of overseas best practices
 - Ready-to-scale projects and programmes
-
- Grant Size and Duration
 - Typically at least **\$50,000** Singapore Dollars
 - Minimum of **one year** and maximum of **three years**

Funding Guidelines

Eligibility

- Funding will **NOT** be extended to:
- Existing **mainstream** government programmes or services
- Projects that are **already receiving other funding from Tote Board** for the same project
- Projects that **do not directly benefit persons with disabilities and/or their caregivers** (e.g. projects that are solely research-based, or projects used solely for internal organisation capability building will not be eligible)

- The following **EXCLUSIONS** will apply to all applications:
- Benefitting only an individual
- Political – for the promotion of a certain political ideology or party
- Religious – for the promotion of religion
- Commercial – for the purpose of profit making

Funding Guidelines

Funding Quantum

- Up to 90% of project cost (determined by Evaluation Panel)
- Remaining 10% or more to be funded by applicant or co-funding can be sought

Eligible Funding Components

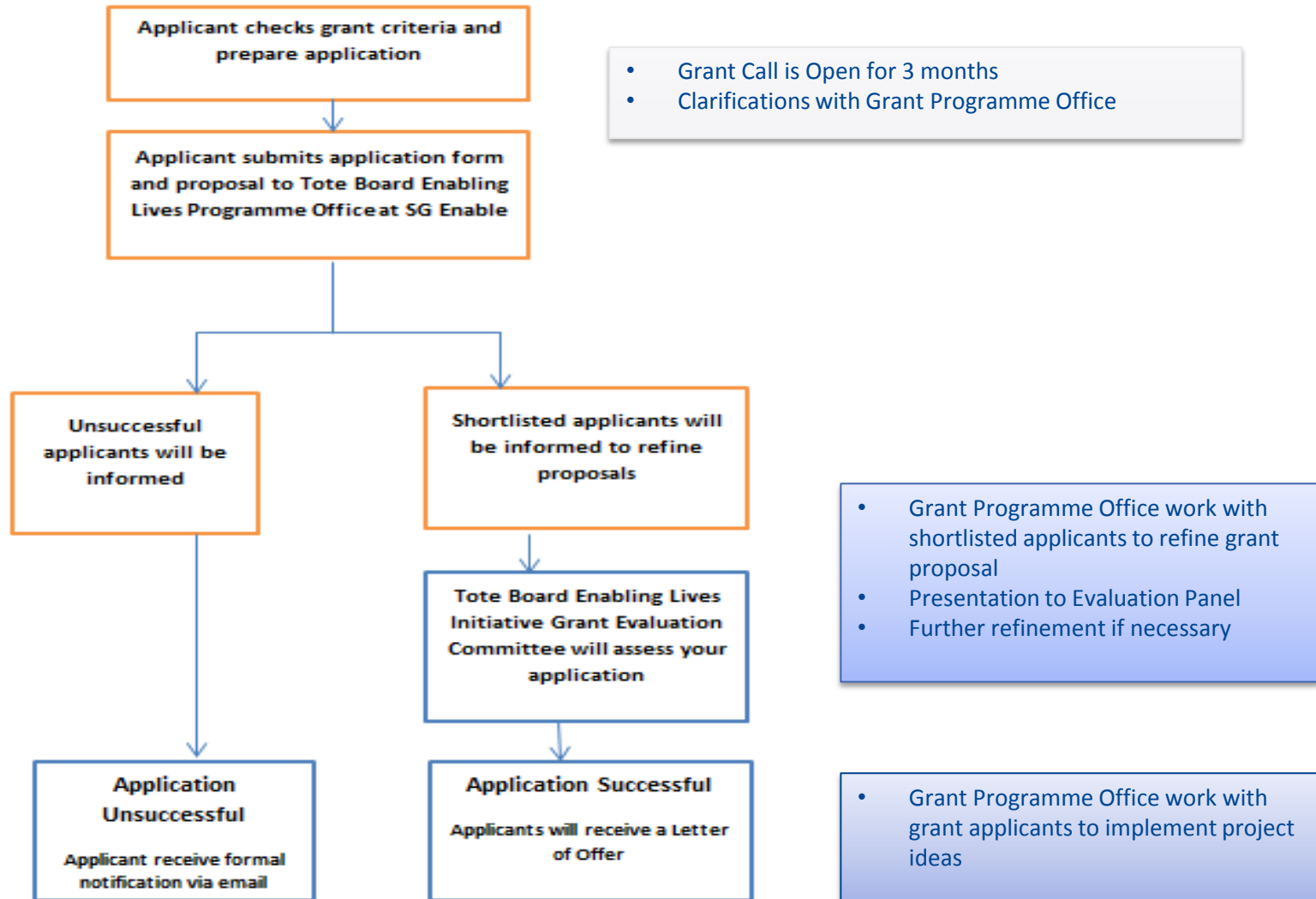
- Manpower
- Operating Cost
- Equipment, Software and Consumables
- Marketing and/or Outreach
- Research and/or Evaluation
- Others

**Evaluation Panel will determine funding quantum and funding components.
All requested funding components must be directly attributable to the grant project.**

Evaluation Criteria

Criteria	Description
Shared Outcomes	<ul style="list-style-type: none">• Potential to contribute to the shared outcomes and intended impact
Feasibility	<ul style="list-style-type: none">• Project value and potential to deliver
Collaboration	<ul style="list-style-type: none">• Collaboration and partnership
Innovation / New Approach	<ul style="list-style-type: none">• Novelty compared to existing solutions
Scalability / Sustainability	<ul style="list-style-type: none">• Potential to be continued, expanded or mainstreamed, in the future
Evidence-based research	<ul style="list-style-type: none">• Supported by research, evidence of impact, overseas examples, trialed-and-tested projects

Application Process



Application Form

(download from website)



Application Form

Tote Board Enabling Lives Initiative Grant

Instructions:

- i. This form will enable the Tote Board Enabling Lives Initiative (TB-ELI) Grant Project Office at SG Enable as well as the Evaluation Committee to make an assessment of your proposed project idea.
- ii. Please complete all items in the form. Any missing information will delay the processing of the application.
- iii. If certain items are not applicable to your project, please indicate 'NA' accordingly.
- iv. Please submit your application form to SG Enable before the closing date of the Grant Call.

Note:

To check the checkboxes, double click on it and choose "Checked" in the default value field.

Required to be submitted:

- i. A completed Application Form

Optional:

- ii. Any additional documents / materials on project idea that contain information not captured in the application form

The above document(s) are to be submitted to:

Attention: TB-ELI Grant Programme Office

SG Enable
20 Lengkok Bahru, #02-06 Singapore 159053

Or email to enablinglivesgrant@sgenable.sg

For more information on application and approval process:

Visit www.sgenable.sg/enablinglivesgrant

For enquiries:

Email us at enablinglivesgrant@sgenable.sg

or Call us at 1800 8585 885

ALL INFORMATION PROVIDED WILL BE HELD IN STRICTEST CONFIDENCE

Contact Information

General Infoline: 1800 8585 885

Tote Board – Enabling Lives Initiative Grant Programme Office

Email : enablinglivesgrant@sgenable.sg

SGE Website : www.sgenable.sg/enablinglivesgrant

TB-ELI Website : www.enablinglives.sg