

THE GIFT OF **Empowerment**



CATALOGUE

SOCIAL GIFTWARE




i'mable
COLLECTIVE





Welcome to i'mable Collective by SG Enable

Our collection of gifts
are designed and produced
by artists with disabilities.





Introduction to **i'mable Collective**

i'mable Collective fosters multi-sectoral collaborations among artists, craft makers, creatives and enterprises to develop a viable market for quality merchandise and services made by/with persons with disabilities.

With programmes for capability building, retail collaboration and partnership outreach, this initiative by SG Enable creates enterprise opportunities to energise inclusive communities to bring about social impact. The wide array of gifts and art pieces featured in this catalogue showcases the talents and capabilities of our makers.

Every item is made by/with our makers with disabilities and through months and years of skills training. These gifts embody the determination and passion of our makers and are truly gifts from the heart.

Website: imablecollective.sg

Email: imablecollective@sgenable.sg



Support the Disability Community Today

In choosing to support our makers, you help to build and enhance their capabilities through skills training, and empower them by providing opportunities for meaningful employment. All of these collectively contribute to their independent living.

From the development of bespoke corporate gifts, to the purchase and sale of socially conscious merchandise, and the commissioning of art pieces made by/with persons with disabilities, i'mable Collective is able to connect every unique project with the right maker.

Note: Products shown in this catalogue might be available in various colours and designs, kindly enquire with the respective makers for more information.





Content Page

Apparels & Accessories.....	1
Bags & Pouches.....	14
Display Art.....	30
Food & Beverage.....	46
Home & Living.....	49
Stationeries.....	69
Travel.....	82
Makers Profile.....	85



An abstract painting with vibrant, textured brushstrokes in shades of orange, yellow, green, blue, and pink. The composition is dynamic and layered, with a central area of more detailed, colorful strokes.

Apparels & Accessories



ART:DIS

ARTS & DISABILITY
SINGAPORE



Square Scarf

Description : 100% silk

Size : 90 cm

Contact: general@artdis.org.sg



UNIQLO T-Shirt

Description : 100% premium SUPIMA® cotton

Size : Comes in XS-XL



BLOOMBACK



Personalised Birthstone Bag Charm

Description : Handcrafted using 100% real premium flowers and a birthstone

Size : Approximately 5 cm x 5 cm x 5 cm

Contact: happiness@bloomback.org



Socks

Description : Knitted knee length. Adult & Children.
Two Designs.

Size : Free Size

Contact: Sulyanna@downsyndrome-singapore.org



EDEN+ELIE
WIDE GOLD BANGLE
spirit of place - ocean

Wide Gold Bangle

Description : 14k gold-plated bangle. Handwoven with 24k gold, matte, opalescent & polished delicas. Lead & nickel-free. Suitable for sensitive skin.

Size : Inner diameter - 6.6 cm
Height - 2.5 cm

Contact: hello@edenandelle.com

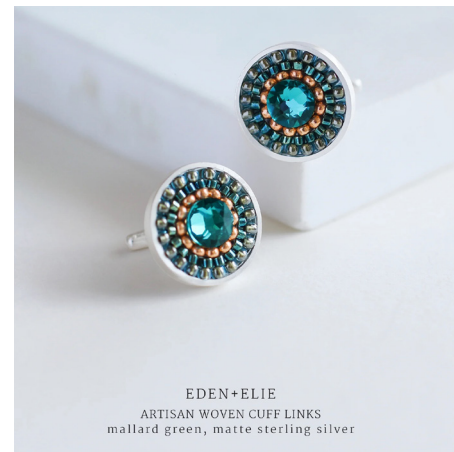


EDEN+ELIE
DROP EARRINGS
spirit of place - ocean

Everyday Drop Earrings

Description : 14k gold-fill earring hooks, lead and nickel-free for sensitive ears. Handwoven with 24k gold, matte, opalescent & polished delicas. Lead & nickel-free. Suitable for sensitive skin.

Size : Hangs 4 cm from earlobes.



EDEN+ELIE
ARTISAN WOVEN CUFF LINKS
mallard green, matte sterling silver

Artisan Woven Sterling Matt Silver Cuff Links

Description : Solid matt sterling silver or rose gold. Handwoven with delicas and seed beads. Focal crystals. Lead & Nickel-free. Suitable for sensitive skin.

Size : Diameter - 1.6 cm
Height - 2.5 cm



EXTRA^o Ordinary People



Thaddino Oversize Shirt

(Black), White available

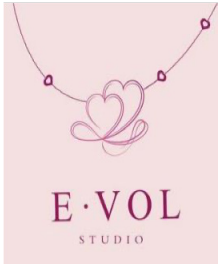
Size : Size S, Chest: 52 cm, Length: 61 cm
Size L, Chest: 62 cm, Length 72 cm



Thaddino Scarf

Dino in the Forest

Contact: contact@extraordinarypeople.sg



Handmade Earrings

Uniquely handmade polymer earrings.

Handmade Keychain

Uniquely handmade polymer keychain

Contact: evolstudiosg@gmail.com



Utama Collection Scarf

Description : Fine silver chiffon.
Wine, Lavender, Champagne,
Midnight, Indah

Size : 95 cm x 95 cm

Contact: imablecollective@senable.sg



Utama Collection Jiwa Brooch

Description : Fine silver with vitrous enamel
detailing. Silver.

Size : 4.4 cm x 4.4 cm



Utama Collection Ribbon Scarf

Description : Silk satin.
(Left) Cina Manis
(Right) Murni

Size : 5 cm x 85 cm

Contact: imablecollective@sgenable.sg



Remix 55 Collection Enamel Pins

Description : Three enamel pins jointly created by artists with cerebral palsy and supportive enterprise partners. Design inspirations were taken from original NDP 2020 artworks produced by artists with disabilities from Cerebral Palsy Alliance Singapore (CPAS) and Superhero Me, which were fashioned into attractive enamel pin accessories by master enamellists at Royal Insignia.

Size : Bricko - 2.5cm x 3cm, Sunnie - 2.2cm x 2.2cm, Whaat - 1.8cm x 2.7cm



Contentment Brings Lasting Happiness Keychains

Description : Keychain

Size : 4 cm x 4 cm

Contact: bob@thefatfarmer.com



Polymer Clay Earrings

Assorted colours available

Description : Small round/Square Shape.

Handmade Polymer Clay Earrings.

Every piece is a unique individual piece, handmade by beneficiaries hence actual product will differ from the image shown.



SG Vanda Miss Joaquim Scarf

Description : Silk Satin. Dark Red, White Pink, Yellow, Turquoise, White Red.

Size : 110 cm x 110 cm

Contact: welovesfr@gmail.com

SG Food Bucket Hat

Description : Silk Satin. Breakfast Set, Kuih

Size : 110 cm x 110 cm



Polymer Clay Earrings of Local Delicacies

Assorted colours available

Description : Handmade Polymer Clay Earrings. Miniature Ang Ku Kueh, Teochew Png Kueh, Tutu Kueh, Rainbow Kueh Lapis made with polymer clay, made into ear studs.

Size : 1.3 cm x 1.3 cm

Contact: tianchenzy26@gmail.com



Polymer Clay Earrings of Sweets & Desserts

Assorted colours available

Description : Handmade Polymer Clay Earrings. Miniature Rainbow Cake, Gummy Bears, Macarons, Iced Gems Biscuits, Paddle Pops made with polymer clay, made into ear studs and drop earrings.

Size : 1.5 cm x 1.5 cm



Polymer Clay Earrings of Orchids, Daisies, Roses

Assorted colours available

Description : Handmade Polymer Clay Earrings. Miniature Orchids, daisies, Roses made with polymer clay, made into ear studs.

Size : 1.5 cm x 1.5 cm

An abstract painting with thick, expressive brushstrokes in a variety of colors including yellows, oranges, reds, pinks, purples, blues, and greens. The composition is dynamic and textured, with a sense of movement and depth. The text 'Bags & Pouches' is overlaid on the left side of the painting.

Bags & Pouches



Tote Bag & Pouch Collection

Description : 12 oz Cotton Canvas Natural White. Artably's cotton canvas tote bags come with a matching pouch case featuring their quirky characters. They are perfect for everyday use! Locally unique, these eco-friendly tote bags are a must-have for carrying files, books, clothes, accessories & are great for a quick run for carrying your groceries at local market or a makan trip at our local hawker centers.

Size : Tote Bag: 35 cm x 39 cm

Contact: hello@artably.co



ART:DIS

ARTS & DISABILITY
SINGAPORE



Recyclable Shopping Bag

Description : Folds into a rectangle pouch

Size : 50 cm x 41 cm

Contact: general@artdis.org.sg



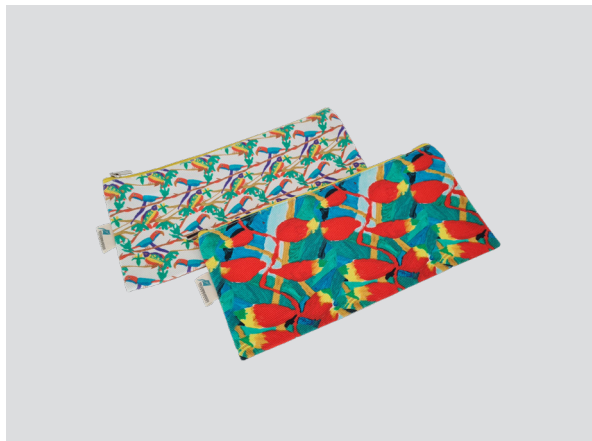
Tote Bag

Available in blue, purple and green

Description : Singapore Sign Language (SgSL)
Alphabet Tote Bag

Size : 37 cm x 32 cm

Contact: sylvia@don8uri.com



Zipper Pouch (Small)

Description : Cotton fabric.
Assorted designs.

Size : 23.5 cm x 11.5 cm



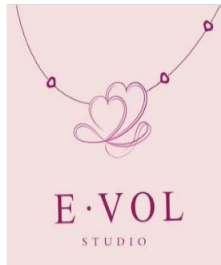
Zipper Pouch (Large)

Description : Cotton fabric. Assorted designs.

Size : 20 cm x 15 cm



Contact: Sulyanna@downsyndrome-singapore.org



Cross-body Canvas Bag

Description : Folds into a rectangle pouch

Size : 23 cm x 26 cm x 9 cm
Shoulder strap length: 60 cm
With one inner pocket.
Light weighted.



Contact: evolstudiosg@gmail.com



JOURNEY



Heritage Windows Laptop Sleeve

Description : For laptops up to 14".
Padded for protection.
Lightweight.

Size : 35 cm x 26 cm



Multi-purpose Pouch

Description : 2 designs available.
Nylon material.
Waterproof inner lining.
Washable.

Size : 18 cm x 13 cm x 8 cm



Soft Canvas Tote Bags

Description : 5 designs available.
Cotton canvas material. Has an inner pocket.

Size : 36 cm x 39 cm x 8 cm
Strap: 30 cm from shoulder to bag

Contact: yanru.cai@touch.org.sg



JTMUSES®
discover art-inspired gifts

Two-Tone Deluxe Classic Tote Bag

Description : Tote Bag

Size : 29 cm x 17.5 cm



Contact: jtmuses@singnet.com.sg



Contentment Brings Lasting Happiness Black Strap Tote Bag

Description : Tote Bag

Size : 35 cm x 45 cm x 15 cm



Contact: bob@thefatfarmer.com



THE CREATIVE CHAIR



Tote bag (Opened)



Tote bag (Folded)



Drawstring Pouch



Tote bag (Opened)



Tote bag (Folded)



Drawstring Pouch



Tote bag (Opened)



Tote bag (Folded)



Drawstring Pouch

Tote Bag Set

Clementine, Iolanthe, Roscoe

Description : Hand painted artworks by artists with disabilities printed on foldable tote bags and draw string pouches. The tote bag comes in a perfect size for your laptop, A4-sized documents, groceries and your shopping loot! The pouch is ideal for your mobile phone and wallet when you go for lunch. Not to mention, it fits power banks too!

Size : Foldable Tote bag: 33 cm x 36 cm (open). 18 cm x 15 cm (zipped).
Drawstring Pouch: 14 cm x 21 cm.

Contact: contact@mdas.org.sg



minds



Tote Bag - Patterned Leaves and Space Dream

Description : Single Side Artwork Print.

The perfect companion for grocery shopping or simply a utility bag for daily runabouts. Say no to paper or plastic bags and be easy on environment!

Contact: szekeat.tang@minds.org.sg



Batik Purse

Description : These Signature Batik Purse is handmade and specially designed and painted by youths with special needs from Arts@Metta. This design has two pocket compartments. Each batik painting goes through the tedious process of tracing, waxing, painting, being treated with a batik fixer, washing and scrubbing with hot water, and ironing before it is curated into a product.

Size : 12 cm x 10 cm

Contact: evasoh@metta.org.sg



Signature Batik Pouch

Description : These Signature Batik Pouches are handmade and unique in print. They boast a good capacity to accommodate your essential stationeries. They are specially designed, painted, and processed by our youth with special needs. Each batik painting goes through the tedious process of tracing, waxing, painting, being treated with a batik fixer, washing and scrubbing with hot water, and ironing before it is curated into a product. Each Signature Batik Pouch is washable.

Size : 22 cm x 13 cm x 5.5 cm



Serving people with
disabilities since 1964



Vintage Leather Tech Roll

Description : Oil-tanned crazy horse leather

Size : 30 cm x 17 cm (Opened)

Contact: li_min_qi@spd.org.sg



SG Food Zip Pouch

Description : Breakfast Set

Size : 20 cm x 15 cm



Drawstring Pouch (SG)

Description : Orange, Red

Size : 22 cm x 17 cm



SG Print Laptop Bag

Description : Vanda Miss Joaquim, Red Dragon

Size : 40 cm x 28 cm x 10 cm



Tote Bag

Description : Merlion, Blue Orchid, Green Vanda Miss Joaquim

Size : 30 cm x 26 cm

Contact: welovesfr@gmail.com



Duo Access Triangle Pocket Pouch

Description : Breakfast Set.

Size : 10.5 cm x 10.5 cm x 10.5 cm

Contact: galvin.choo@savh.org.sg



Pocket Size Tissue Holder

Description : Namecard Holder.

Size : 12 cm x 10 cm



Canvas Tote Bags with Colourful Pockets

Description : Sewn by Maylin from Friends of the Disabled Society. In spite of her physical disability, Maylin continues to express her flair for matching materials to create beautiful things such as embellishing plain canvas bags with colourful fabrics sewn onto the bags as pockets.

Size : 33 cm x 38 cm. Handle is 21 cm drop length



Contact: jongoh@teddythotz.com, georgewong@teddythotz.com



Display Art



Copper Tooling Plaque

Description : (Left) Singapore iconic Building
(Right) Vines

Size : (Left) Singapore icononic Building, A4
(Right) Vines, 25 cm x 25 cm

Contact: harmeet@bizlink.org.sg



Different

Description : Acrylic paints on canvas.

Size : 45.7 cm x 45.7 cm

Contact: glacy@glacysohart.com



2 Vanda Miss Joaquim On Lush Greenery

Description : Acrylic paints on canvas.

Size : 45.7 cm x 45.7 cm



Orchid series with Frame

Description : Transparency Paper.
Framed.

Size : 30 cm x 30 cm



Prosperous Koi Series with Frame

Description : Paper. Framed.

Size : 30 cm x 40 cm or
40 cm x 50 cm



Aquarium Fish Series with Frame

Description : Canvas. Framed.

Size : 35 cm x 35 cm

Contact: tommy_tng@cpas.org.sg, terryteong@cpas.org.sg



A3 Mixed Media

Description : Bandstand @ the Botanic Gardens

The bandstand at the Singapore Botanic Gardens is an octagonal gazebo built in 1930. It had staged military band performances for many years but it is no longer used for this purpose. BG has created another venue for this. It is now a very popular “proposal” site for many young couples!

Size : A3, 300 gsm art paper

Contact: glacy@glacysohart.com

isaac.liang.com



Nasi Lemak Painting

Description : Watercolour painting.

Size : A3

Contact: zhijieart@gmail.com



Gouache Painting on Wood

Description : (Left) Beaulieu House Sembawang Park (2017)

(Middle) Meiji Jingu Gyoen (2015)

(Right) Sembawang Hot Spring (2017)

Each painting is done on live location for two hours with Gouaches paints by Issac Liang.

Size : A3



Resin Art Real Pressed Flowers & Leaves

Description : This elegant resin art piece 福杯满溢 (my cup runneth over) is created by Jojomama's founder who made the resin drip art design for the backdrop, and makers with disabilities from Jojomama who created the round resin art featuring Chinese characters and pressed flowers.

Size : 75 cm x 30cm x 6 cm

Contact: jojomama.net@gmail.com



① JOURNEY



Ceramic Plate with Frame

Cultures of Singapore - Peranakan (6 designs available)

Description : Handcrafted ceramic plates inspired by Peranakan culture. Peranakan motifs typically symbolise marital harmony and longevity. These handcrafted handicrafts feature colourful and eye-catching designs by JOURNEY's special artists.

Size : 27 cm x 27 cm

Contact: yanru@touch.org.sg



Commissioned Calligraphy Pieces

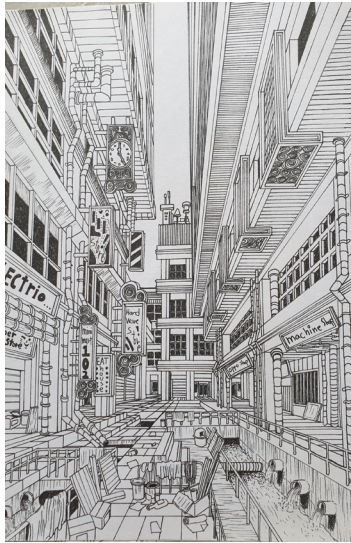
Description : A5 table display wooden frame with glass.

Size : A5

Contact: bob@thefatfarmer.com



KENNETH ARTS



Abandoned Metro Urban City

Description : This city is in a tightly-controlled environment. It was abandoned for years and many have moved out due to an earthquake. Prints only.

Size : Adaptable

Contact: jennifer_suet@yahoo.com.sg



Singapore Great Urban City

Description : Singapore has one of the largest localised urban city. This drawing was referenced from a photograph of a widespread view of the city.

Size : Adaptable



Quiet Village Secret Valley

Description : In the dark ages, people establish this quiet village, living in secret to avoid war and oppression. Prints only.

Size : Adaptable



THE
CREATIVE
CHAIR



Framed Painting: Starry Night

Description : Medium: Acrylic on Paper.

Inspired by Vincent Van Gogh's "The Starry Night", Saifudeen created his own version in 2019. Using the impasto painting technique, he completed the artwork using a paintbrush and a plastic fork on very thick paint. This created detailed textures and it is as though the artwork had come alive together with the movement of the brushstrokes.

Artist: Muhd Saifudeen (1999 - Present)

Size : 53.5 cm x 41 cm

Contact: contact@mdas.org.sg



Batik Paintings

Description : Batik paintings by artists from Arts@Metta are handmade and unique. They are specially designed, painted, and processed by artists with disabilities. Each batik piece goes through the tedious process of tracing, waxing, painting, being treated with a batik fixer, washing and scrubbing with hot water, and ironing before it can be curated into a product. Tropical Floral.

Size : 44 cm x 34 cm with frame

Contact: mictan@metta.org.sg



Mosaic Art (Panda)

Description : Framed Piece. This artwork is put together by a group of students from Metta school under their art development programme.



Diamond Art

Description : Bring the serenity of nature into your home with this stunning diamond art piece. Crafted by: Vince. This gift is proudly handcrafted by Vince, a young artist with autism who enjoys doing diamond art. With exquisite skills, he can fine-tune beautiful artworks and finds enjoyment in doing so.

Content : 1 x Diamond Art with White Frame

Material : Diamond Art Beads, Plastic Frame and Plastic Panel

Packaging : Organza Bag, Bubble wrap

Size : 27cm (L) x 27cm (W) x 6cm (H) (inclusive of frame). Weight: 930g.

Contact: galvin.choo@savh.org.sg

String Art Firework

Description : This beautiful art piece is created with the pull-string method by Diana Soh and guided by volunteer Sandra Lee from SAVH. Acrylic on Canvas.

Size : 15 cm x 15cm



Sakura at Mt Fuji

Description : Acrylic painting.

Size : 40 cm x 50 cm

Contact: specialthots7711@gmail.com

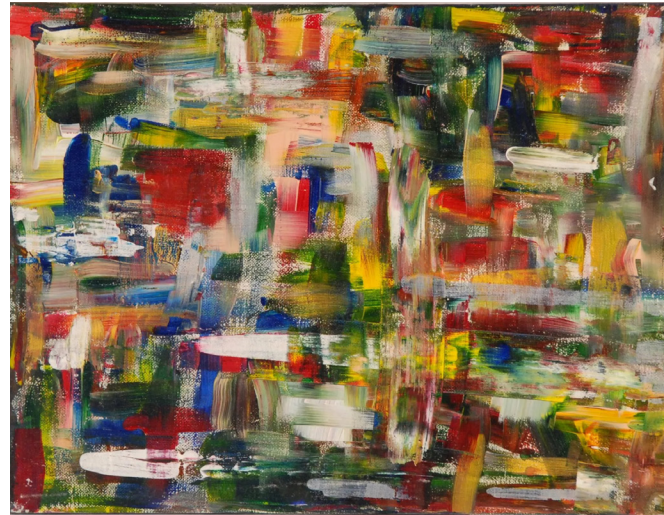


Table Top Decorative 3D Town House Painting

Description : This painting was one of Chalmers' abstract art painting, done in 2014. This abstract art reflects the mind of special needs as they have information processing issues. Though they somehow has a rough picture but they just find it challenging to put all the information in a organized and clear manner.

Size : 22 cm x 2.5 cm x 33 cm



Pet Portrait

Description : Acrylic paint on A4 canvas board.

Painted by Lishan who has a passion and talent for painting and crafts. Lishan, who has autism, finds joy and relaxation especially in painting. Lishan's uncle was an established artist and she remembers vividly his room full of paintings. From young, Lishan has loved drawing and colouring.

Size : A4

Contact: jongoh@teddythotz.com; georgewong@teddythotz.com



Chinese Calligraphy Longevity

Description : Artist Wesley Seah created this piece using black rice paper and Chinese gold ink, fusing calligraphy and painting techniques together. As peaches are commonly associated to longevity among Chinese belief, he let his creativity run wild and succeeded in composing this artistic piece after 3 months of hard work.

Size : 43 cm x 68 cm



Chinese Ink Calligraphy "Grateful"

Description : Artist Wesley Seah composed this piece of calligraphy "Grateful" using Chinese black ink on coloured rice paper. Under the encouragement of friends and buyers, he began to explore writing 2 Chinese words on a single piece of rice paper. After 2 months of effort, he succeeded in this composition on a round rice paper of diameter.

Size : 38 cm



Chinese Ink Painting Past Memories

Description : Artist Wesley Seah created this painting on rice paper using Chinese black ink. It features a beautiful sight he saw when he visited China. Instead of using colour pigments to bring the scene alive, Wesley decided to use the concept of outline and sketching to capture what he could remember.

Size : 14.4 cm x 26.3 cm

Contact: wesley.seah@artsofvisuallyimpaired.asia



Food & Beverage



ART:DIS

ARTS & DISABILITY
SINGAPORE



Hook Coffee Set

Description : A box of 8 drip-coffee bags featuring classic flavours such as hazelnut chocolate, spiced biscuits, nut brittle and Singablend.

Contact: general@artdis.org.sg



Eggless Cookies in Brown Kraft Pack

Description : Small - 6 pcs/pack
Flavours: Cranberry/
Butter Almond/
Cornflakes. Large - 6 pcs/
pack. Flavours:
Cranberry/ Butter
Almond/ Cornflakes/
Earl Grey/ Chocolate
with Macadamia Nuts

Contact: yenyen@metta.org.sg



Eggless Cookies in Bottle (Small Bottle)

Description : Approx 13 pcs/bottle.
Flavours: Cranberry/
Butter Almond/
Cornflakes



Eggless Cookies in Bottle (Medium Bottle)

Description : Approx 22 pcs/bottle.
Flavours: Cranberry/
Butter Almond/
Cornflakes/ Earl Grey/
Chocolate with
Macadamia Nuts



Home & Living



Mug & Coaster Collection

Description : Artably's quirky designs are printed on both sides of the ceramic mug so it will be seen by others regardless of whether you are right or left handed. All their mugs are dishwasher friendly and microwave safe. Comes with a matching coaster which can double off as a lid too.

Size : Ceramic. 11 oz.
Hard Board, 9 cm x 90 cm

Contact: hello@artably.co



ART:DIS

ARTS & DISABILITY
SINGAPORE



Supermama Trays

Description : Fits up to A4-sized paper. Made of lacquerware.

Contact: general@artdis.org.sg



Zero Waste Cutlery Set

Description : Made of wood. Comes with chopsticks, fork & spoon.



Batik Print Mug Set

Description : Ceramic mugs

Contact: mictan@metta.org.sg



Pottery Saucers

Description : These Signature Pottery Saucer is handmade and each piece is unique. They are specially designed and processed by our youths with special needs. Each pottery piece goes through the tedious process of kneading, rolling, cutting, sculpting, drying, coloring and firing before it is curated into a product.

Size : 8 cm in diameter



Pottery Teapot Set

Description : These Signature Pottery Teapot is handmade and each piece is unique. They are specially designed and processed by our youths with special needs. Each pottery piece goes through the tedious process of kneading, rolling, cutting, sculpting, drying, coloring and firing before it is curated into a product. Each set comes with one teapot and 2 matching teacups.

Size : 15 cm x 15 cm (Teapot)
5 cm x 5 cm (Tea cups)



Batik Print Towel

Vanda Miss Joaquim, Dinosaur

Description : Each design is specially designed, painted, and processed by our youth with special needs. Each batik piece goes through the tedious process of tracing, waxing, painting, being treated with a batik fixer, washing and scrubbing with hot water, and ironing before it can be curated into a batik painting print.
Material: Microfibre

Size : 69 cm x 35 cm

Contact: mictan@metta.org.sg



Batik Print Coasters

Description : Each design on our Batik Print coaster is specially designed, painted, and processed by our youth with special needs. Each batik piece goes through the tedious process of tracing, waxing, painting, being treated with a batik fixer, washing and scrubbing with hot water, and ironing before it can be curated into a batik painting print.

Size : 10 cm in diameter

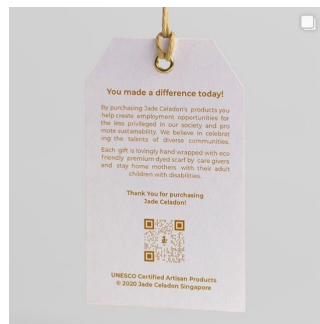


Zen Tea Set

Description : Comes with gift box.

Size : Gift box of 30 cm x 12 cm x 10 cm

Contact: faith@artse.sg



ArtSE's packaging

Description : Persons with Disabilities (PWDs) were taught 10+ silk packaging/wrapping designs for wine bottles, fruits, tea sets and bento. The Zen Tea Set is wrapped in these unique packaging, packaged by PWDs. Please note that packaging designs cannot be chosen and images are for illustration purposes only.



BLOOMBACK



Happiness Bottle

Description : A set of 3 preserved flower arrangement sealed in a high clarity glass bottle

Size : Approximately 3cm x 13cm



Bloomback Preserved Flowers Bluetooth Speaker

Description : High quality audio speaker featuring with LED lights and handcrafted real premium flowers. Bluetooth speaker can be connected to any device. 8 hours battery life after every charge.

Size : Approximately 12.5 cm x 12.5cm x 15.5 cm

Contact: happiness@bloomback.org



Pillow

Description : Front: SgSL Alphabet
Back: I Love You sign
Front & back: interchangeable

Contact: sylvia@don8uri.com



Table Runner

Description : Anthurium design.

Size : 35 cm x 210 cm

Contact: Sulyanna@downsyndrome-singapore.org



gentleHands craft



Room Diffuser (Pocket Flower Garden - PFG)

Description : 100% pure essential oils. All natural botanical fragrance oils with vegan soy wax. Lasts up to 35 days. Personalisation wordings available. Choose from more than 10 scents and 7 designs. Workshops available.

Size : 70g

Contact: info@gentlehandscraft.com



Hand Poured with Vegan Soy Wax and 100% Cotton Wick Candles - 200g

Description : Burns up to 30H. Comes in 100% pure essential oils/ All natural botanical fragrance oils. Personalisation is available. DIY kits available too.

Size : 200g



Tiffin Carrier and Neoprene Bag

Description : Peranakan, Fish and Flora, Geometry, Architecture.

Size : 70g

Contact: imablecollective@sgenable.sg



Real Pressed Flowers & Leaves Resin Coaster with an Inspirational Word

Description : Handmade coaster in 10cm with rim, is suitable for most cups and mugs or as trinket tray. Select from a wide variety of flowers, leaves and ink pigment design with your Company name and logo.

Size : 10 cm x 1.3 cm - 1.5 cm

Contact: jojomama.net@gmail.com



Award Plaque with Acrylic Leg (Organic Shape)

Description : Customised design of plaque from a wide variety of flowers, leaves and ink pigment design. Customised Award message with your Company name and logo can be added. Backing of plaque may be left as transparent or with your choice of colour. Organic shape plaque (6-7mm thick) comes with either acrylic leg or natural timber base.

Size : Dimension of Plaque: Diameter: 20cm organic shape round plaque with either acrylic leg.





Jesmonite Coaster, Paperweight, Trinket Tray

Description : Peranakan, Fish and Flora, Geometry, Architecture

Size : Circle Diameter: 10 cm (external), Diameter: 9 cm (internal), height: 1.3- 1.5 cm,
Hexagon Width: 11.6 cm (external), Length: 10cm, height: 1.3 cm

Contact: jojomama.net@gmail.com



① JOURNEY



Papilionanda Orchid Bone China Plate

Description : Colours - Midnight Blue & Royal Blue.
Comes with display stand. Oven-safe,
Dishwasher-safe.

Size : 17.8 cm diameter

Contact: yanru@touch.org.sg



Inside Out Collection - Insulated Water Bottle

Description : Keep cold water up to 24 hours.
Keep hot water up to 12 hours.

Size : 750 ml



Lacquer Rectangular Tray (Shophouse)

Description : Lacquerware.

Size : 25 cm x 18 cm x 45 cm



Lacquer Trinket Box Featuring Quintessential Shophouses along Koon Seng Road

Description : Lacquer on wood.

Size : 11 cm x 11 cm x 4 cm



A Blast from the Past Retro Enamel Mug

Description : Enamel Mug.

Size : 380 ml 8.9 cm x 7.8 cm



Acrylic Trivets & Coasters

Description : Made of acrylic.

Size : 10 cm x 10 cm

Contact: jtmuses@singnet.com.sg



Junlefont



Thermal Flask

Everyday is a Good Day (Left) and
Be Contented Stay Happy Thermal Flask (Right)

Description : 304 stainless steel inner tank. An aesthetically pleasing thermal flask that lifts your mood instantly. The Chinese calligraphy words 日日是好日 printed on the thermal flask can be literally translated as Every day is a Good Day. The thermal flask can keep your drinks cold or hot for at least 6 hours. Food grade PP lid with silicone seal.

The Chinese calligraphy words 知足常乐, literally translated as Be contented and Stay Happy, is a good reminder to us as we go about our daily lives. The thermal flask can keep your drinks cold or hot for at least 6 hours. Food grade PP lid with silicone seal.

Size : Left - 350 ml. 6.5 cm x 18 cm
Right - 450 ml. 6.5 cm x 21 cm

Contact: bob@thefatfarmer.com



Découpage Tile Coaster

Description : Assorted designs available.

Lovely coasters with handmade decoupaged peranakan artwork on white tile.

Contact: szekeat.tang@minds.org.sg



Mosaics Tiles Coaster

Description : Made from glass mosaic tiles on a piece of plywood. Perfect as a coaster for your pots and drinks! Each mosaic creation is handpicked and crafted by Gareth with love.

Material : Wooden board
Mosaics Tiles with grouting

Colour : As shown

Packaging : Kraft bag, Bubble Wrap

Size : 10 cm x 10 cm x 1.5cm. 200 g.

Contact: valen@sgifting.com



Postage Stamps Coaster Set (4pcs/set)

Description : Used donated stamps are carefully placed together by our blind clients to make a coaster.

Size : 10.5 cm x 10.5 cm

Contact: galvin.choo@savh.org.sg



Dog-Shaped Face Towel

Description : Hand folded by the blind to shape like a dog face towel.

Size : 12.7 cm x 6.35 cm
30.5 cm x 30.5 cm (Unfolded)



February Dino
~ Valen-Dino



Polymer Clay Figures of Dinosaurs and Animals

Description : Miniature figures of dinosaurs and animals made by Isaac, a youth with autism.

Size : 3 cm x 5 cm

Contact: tianchenzy26@gmail.com



Stationeries



ARKADEMIE™

Preserve Your Legacy



Heritage A5-P Leather Notebook Cover, Classic Tan

Description : 4-oz, natural full-grained vegetable-tanned, buffalo hide leather journal and notebook cover in A5 portrait format. The sleeve's leather strap-and-keeper design ensures decades of use without slackening or splitting. The cover is fully and meticulously hand crafted by experienced craftsmen. It comes with a looped pen holder which fits most drawing pens and mechanical pencils.

Natural leather grain pattern, unique to each hide, can be seen on the cover and will acquire a beautiful natural satin lustre over time. Sleeve fits most brands of perfect-bound and saddle-stitched spine A5 plain journals, notebooks and sketchbooks including Moleskine, Rhodia, Muji, Daler & Rowney, Fabriano and Monologue.

Size : 17 cm x 23.5 cm x 2 cm

Contact: contact@arkademie.com



Piccolo A5 Leather Notebook Cover, Black/Burgundy

Description : 4-oz, natural full-grained vegetable-tanned, buffalo hide leather journal and notebook cover in A5 portrait format. The sleeve's leather strap-and-keeper design ensures decades of use without slackening or splitting. The sleeve is fully and meticulously hand crafted by experienced craftsmen.

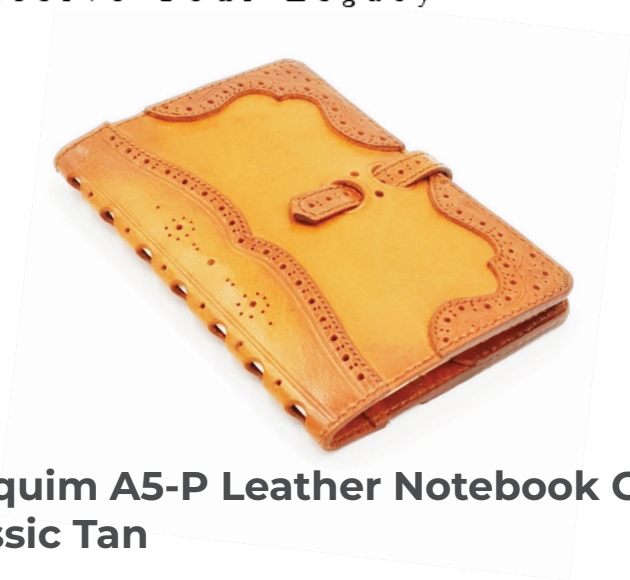
Natural leather grain pattern, unique to each hide, can be seen on the cover and will acquire a beautiful natural satin lustre over time. Sleeve fits most brands of perfect-bound and saddle-stitched spine A5 soft-cover plain journals, notebooks and sketchbooks including Midori, Muji, Fabriano, Rhodia and Traveler's Notebook. Sleeve includes a notebook.

Size : 16.5 cm x 22.5 cm x 2 cm



ARKADEMIE™

Preserve Your Legacy



Joaquim A5-P Leather Notebook Cover, Classic Tan

Description : 44-oz, natural full-grained vegetable-tanned, buffalo hide leather traveller's journal and notebook sleeve in A5 portrait format. The sleeve's leather strap-and-keeper design ensures decades of use without slackening or splitting. The sleeve is fully and meticulously handcrafted by experienced craftsmen. The back of the cover bears the brogue medallion pattern of Singapore's national flower - Vanda Miss Joaquim. Sleeve includes a notebook.

Size : 16.5 cm x 22.5 cm x 2 cm

Contact: contact@arkademie.com



Nyonya A5 Portrait Leather Notebook Sleeve, Turquoise

Description : Handcrafted leather notebook sleeve inspired by the unique South-Eastern Asian Peranakan culture. 4-oz SULLY goat leather from the legendary French tannery ALRAN is used for the construction of the sleeve. Every motif piece is hand-cut, meticulously applied and hand-stitched onto a leather base. Waxed threads are used to strengthen the seams and bind the leather components. The entire sleeve is saddle-stitched for extended durability - a traditional and time-honoured method in fine leathercrafting.

Size : 16.5 cm x 12 cm x 2 cm



Mousepad Collection

Description : Mousepad Material - Soft Rubber with Grip Texture. A uniquely round shaped mousepad to spice up your office/ work from home desks. Artably's characters will definitely help bring fun & positive vibes to your day-to-day work.

Size : Approx diameter 195 mm x 3 mm thickness

Contact: hello@artably.co



Pin Badge Card Collection (Flagship Product)

Description : Acrylic w/ pin backing. Artably's flagship merch are quirky pin badges that comes with a blank greeting card & kraft envelope for you to send a personalised handwritten message for your loved ones. Included in the pack is a matching sticker to seal your envelope for that "sneak peek" feels of what joyful surprise it contains!

Size : Pin Badge Dimensions: within 4.5 cm x 4.5cm
Blank Greeting Card: A6 (10.5cm W x 14.8cm H) 250gsm
Kraft Envelope: C6 (11.4cm W x 16.2cm H)



ART:DIS

ARTS & DISABILITY
SINGAPORE



Faux Leather Notebooks

Description : Interchangeable covers.
Options of plain or lined pages

Size : B6

Contact: general@artdis.org.sg



Faux Leather Cardholder

Description : 2 pockets. Comes with lanyard



Pottery Paper Weights Set

Description : Material - Microfibre.

These Signature Pottery Paperweight is handmade and each piece is unique. They are specially designed and processed by our youths with special needs. Each pottery piece goes through the tedious process of kneading, rolling, cutting, sculpting, drying, coloring and firing before it is curated into a product.

Size : 5 cm x 5 cm

Contact: mictan@metta.org.sg



Fabric Bound Diary

Description : Cotton fabric with inner blank pages. Available in assorted designs.

Size : 22 cm x 14 cm

Contact: sulyanna@downsyndrome-singapore.org



① JOURNEY



Desk Pads

Description : 5 Designs Available
Natural rubber material
Non-slip base

Size : 60 cm x 30 cm

Contact: yanru@touch.org.sg



Joy Series Limited Edition Bullet Journal Bundle Pack

Description : “Finding Joy in the Rain” is an expression of Bob and Hwee Hwee’s attitude in the face of the family’s challenges ahead. “Joy in the Moment” is an expression of Jun Le’s simple happiness and a reminder to choose joy in every moment.

Size : 14 cm x 20 cm x 11 cm. 96 pages. 350gsm Shiruku Ivory cover with 120gsm Summer White premium uncoated pages. Dotted pages with 5mm distance between dots. Exposed thread sewn binding that opens flat from beginning to end.

Contact: bob@thefatfarmer.com



Set of Postcards

Description : A set of postcards.

Size : 10.1 cm x 15.2 cm



Joyful Journey Card-holder and Lanyard

Description : 3 colours. Able to fit 2 cards.



Namecard Holder

Description : Namecard Holder

Size : 11 cm x 6.5 cm

Contact: galvin.choo@savh.org.sg



Serving people with disabilities since 1964



Handbound Journal

Description : Each hand bound journal is meticulously stitched and constructed by our book bindery artisans from start to finish. Our artisans pride themselves in making quality journals that are made to last, with utmost care given to every single process in its fabrication.

Size : Available in A5 (21 cm x 15.3 cm x 1.7 cm) and A6 (10.5 cm x 15 cm x 1.7 cm). 100 gsm ivory-coloured paper suitable for fountain pen. 410g

Contact: li_min_qi@spd.org.sg



Vertical Leather Card Holder

Description : Oil-tanned crazy horse leather

Size : 10.5 cm x 7 cm



Serving people with
disabilities since 1964



SPD X Singapore Airlines: A5 Book Sleeve

Description : This sustainably made soft cover A5 leather book sleeve is handmade by SPD artisans with upcycled leather from retired Business Class seats of the Singapore Airlines plane. A multi-functional product that serves as a protective cover for your precious journal, as well as a neat way to keep all your business cards, pen, wires, all in one place! Customisable with hot stamped names in gold or silver foil, the passport sleeve is perfect as a unique and sustainable gift for your co-workers or personal gifting.

Size : 16.7 cm x 24 cm (Closed), 39 cm x 24 cm (Open)

Contact: li_min_qi@spd.org.sg



Pass Holder & Money Holder

Description : Minimum order quantity is 100 pieces.
Name customisation available.

Size : 16.7 cm x 24 cm



Contact: specialthots7711@gmail.com



Travel



① JOURNEY



Compact Umbrella

Description : 7 designs available. Lightweight 200g.
Windproof, UV Protection.
Comes with matching sleeve.

Size : Length (folded): 24cm
Length (opened): 54cm
Diameter (opened): 92cm

Contact: yanru@touch.org.sg



Serving people with disabilities since 1964



SPD X Singapore Airlines: Passport Sleeve

Description : Handmade by SPD Artisans, this A6 field note/passport sleeve is sustainably made with upcycled leather from retired Business Class seats of the Singapore Airlines Plane. A functional must-have product for your travel adventures capable of holding your passport, cards & cash, boarding pass. Customisable with hot stamped names in gold or silver foil, the passport sleeve is perfect as a unique and sustainable gift for your co-workers or personal gifting.

Size : 21 cm x 15.9 cm

Contact: li_min_qi@spd.org.sg



Vintage Leather Luggage Tag

Description : Oil-tanned crazy horse leather.

Size : 11 cm x 7.5 cm

An abstract painting with thick, expressive brushstrokes in a variety of colors including warm yellows, oranges, reds, pinks, and purples, as well as cooler greens and blues. The composition is dynamic and textured, with a sense of movement and depth. The text 'Makers' Profiles' is overlaid in a dark blue, sans-serif font, centered horizontally and positioned in the lower half of the image. A white horizontal bar is located directly beneath the text.

Makers' Profiles



ARKADEMIE is a maker of Fine Handcrafted Leather Book Covers, Sketchbooks, Journals & Accessories. We are established in Singapore since 2017 and we make Durable and Meaningful Products so they Last a Lifetime and Preserve Your Best Memories.

contact@arkademie.com



Artably is an illustration & design studio based in Singapore. Founded in 2020, our social enterprise aims to build a more inclusive creative community through art & design. We design & collaborate with our differently-abled artists to showcase their talents, share their narratives & support them in developing their financial independence.

hello@artably.co



Formerly known as Very Special Arts Singapore, ART:DIS is a non-profit organisation established in 1993, championing the learning and livelihood opportunities for persons with disabilities in and through the arts. Our wide range of programmes enable them to grow personally and develop professionally.

general@artdis.org.sg



ArtSE was established in 2018 and is a local social enterprise based in Singapore and a non-profit grounds up volunteer group that supports and empowers various vulnerable and disadvantaged groups. Our curated collection of UNESCO-recognised state-level gift Longquan Celadon combined with eco-friendly gift packaging promotes sustainability. We also create employment opportunities to our local marginalised communities to be part of the value-creation process.

faith@artse.sg



Bizlink Centre is a non-profit organisation dedicated to serving the disadvantaged individuals, in particular persons with disabilities, through training and employment in Singapore. Bizlink is a registered charity with the office of the Commissioner of Charities and is conferred the status of the Institution of Public Character (IPC). Services offered by makers in training or employed at Bizlink Centre includes gifts, cards, floral hampers, food & beverage, logistics & fulfilment, data management, cleaning services and more.

harmeet@bizlink.org.sg

BLOOMBACK

Bloomback is a team of like-minded individuals who believe in the power of flowers. They offer lovingly crafted eco-friendly gifts made with long-lasting preserved flowers. With the initiative to empower marginalised communities, they provide skills training and employment, so as to help restore their confidence and emotional well-being. In addition, they champion a movement where event flowers are upcycled to plant smiles in homes and hospices. Bloomback strives to create life-changing gift experiences using flowers to spread happiness, encourage empathy, promote acceptance and nurture love.

happiness@bloomback.org



Benjamin is an artist living with Autism. His fascination with colours, music and the freedom of the great outdoors are some of his key interests.

He relishes music, swimming and taking his daily walks. Art is not easy because of his limited motor skills and coordination but Ben loves it. It is the best way for him to express his love for life.

glacy@glacysohart.com



Cerebral Palsy Alliance Singapore (CPAS) Goodwill, Rehabilitation and Occupational Workshop (GROW) services beneficiaries who have cerebral palsy – a physical disability that affects movement and posture, and usually comes with a range of associated impairments. The GROW initiative, encourages and support their beneficiaries in the pursuit of functional independence and personal development through vocational training.

tommy_tng@cpas.org.sg
terryteong@cpas.org.sg



Christian was diagnosed with Autism when he was 4 years old and was later enrolled at Metta School where he learned to bake and began showing interest in drawing. He loved to draw buses and traffic lights in great details (including the bolts on the wheels). He further hones his artistic talent at ART:DIS where some of his art pieces are on display. This inspired him to want to be an artist, an ambition rooted in the talents of someone as special as Christian.

glacy@glacyohart.com



Down Syndrome Association (Singapore) is a non-profit service agency established in 1996 to support and educate families, professionals and the general public about the genetic condition. The Association is committed to provide holistic support to enable a person with Down Syndrome to attain his or her full potential and be able to contribute back to the society. A labour of love, all products are either crafted or designed by persons with Down syndrome.

sulyanna@downsyndrome-singapore.org



DON8URI - a F&B social enterprise (co-founded by a Deaf & a Hearing) advocates for social integration of deaf individuals by providing them gainful employment with the ultimate social mission to equip them with the relevant skills and eventually the capability to embark on their respective entrepreneurial journey to pay it forward.

We envision a truly inclusive Singapore where Singapore Sign Language (SgSL) is recognised as Singapore's 5th official language.

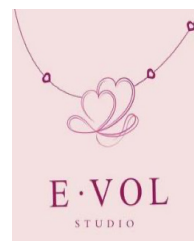
sylvia@don8uri.com



EDEN + ELIE

EDEN + ELIE is a design-led, socially conscious jewellery brand that develops individuals with autism into skilled artisans, empowering them to live more independently. Each piece is woven by hand and paired with premium materials.

hello@edenandelie.com



Established in July 2017, Extra•Ordinary People is a Singapore-registered charity and Institution of Public Character (IPC) which holistically supports persons with special needs while striving for an inclusive society through family-centred and community-supported initiatives.

We call ourselves Extra•Ordinary People because we are all ordinary people who make the conscious decision to go the extra mile. The dot between "Extra" and "Ordinary" in our logo symbolises the heart required to make a difference. The colours in the word "Extra" represent diversity and inclusivity.

contact@extraordinarypeople.sg

E·VOL is project set up by a mother-youth pair. The name "E·VOL" was created by combining two meanings, "EVOLUTION" and "LOVE". "Evolution" describes the gradual progress in special needs' development journey. Despite slow progress, we are here to celebrate every baby step milestone which leads to big changes in the future. "E·VOL", is also the inverted form of "LOVE", symbolising unconditional love and bonding in special needs community and aspiration to build a more inclusive society. A "." is intentionally added in "E·VOL", reminding us the challenges and maybe regression we are facing along the journey. At E·VOL Studio, we design and handcraft every piece of jewelry. Every item is different and special in its own way, just like everyone of us in the society.

evolstudiosg@gmail.com

Gentlehands Craft is a candle studio set up by a parent of an autistic child with high support needs, who loves making decorative wax tablets and candles. Using only natural soy wax imported from USA and 100% pure essential oils, the natural ingredients and biodegradable packaging provides therapeutic benefits and peace of mind to makers and consumers of Gentlehands Craft. As an SG Enable Open Door Employer, Gentlehands Craft provides supported employment to autistic youths with specialised job training and ongoing group community skills therapy.

info@gentlehandscraft.com

isaacliang.com

Issac Liang is a deaf illustrator who began his journey at the age of four when he started drawing on the cupboards of his home with crayons. For six years, Isaac has illustrated for the likes of the Singapore Art Museum, National Heritage Board, Mediacorp, National Council of Social Service, and CHIJMES to name a few. In his free time, he gains inspiration from traveling and cafe-hopping. Through his illustrations, animations, and traditional art mediums, Isaac amplifies visions and uniquely tells visual stories.

zhijieart@gmail.com



Jojomama started out as a mother and son activity in 2020 when COVID forced everyone to hunker down in isolation at home. Having been working with son Jonah on a range of art and craft activities, mum found resin craft is something that they can develop together. Mum creates the composition and design templates with real pressed flowers, and Jonah supports the process with resin mixing and placement of every single flower and leaf. Using the tested workflow and templates, Jojomama now extends training and employment opportunities to other special needs adults like Jonah in the disability community.

jojomama.net@gmail.com



JOURNEY

JOURNEY is an award-winning Singapore brand under TOUCH Community Services that represents the creative talents of people with intellectual disabilities. Through this platform, the artworks of artists with special needs from TOUCH are recognised and shared with a wider public as well as corporates.

Through JOURNEY, some 60 artists will get an opportunity to earn from the sale of their art prints, as well as gain access to platforms for brand collaborations that showcase their talent and tenacity. Such opportunities will enable persons with intellectual disabilities to contribute to society and increase the visibility of their talents in Singapore and beyond.

yanru.cai@touch.org.sg



JTMUSES promotes local artisans by mentoring and working with differently-abled artists in Singapore. The founder’s integration of art and faith is the driving force behind “PRODUCTS BY JTMUSES”, and her background in content marketing in the lifestyle sector provides a unique lens in her product curation.

The Muse Project features curated quality lifestyle products using artwork drawn by persons with special needs. The products range from art pieces, gift items, dinner-ware to stationery.

jtmuses@singnet.com.sg



Diagnosed with autism at the age of three, Jun Le has never been well-versed in expressing himself verbally, yet he practises writing daily by transcribing “The Heart Sutra”. This practice led to an unexpected creation of a simple and unique font: “JunLe Font”.

bob@thefatfarmer.com

KENNETH ARTS

Kenneth Arts, an illustrator with autism, brings a unique and captivating viewpoint to his art. Despite his quiet nature, his illustrations speak volumes, expressing his thoughts and opinions with eloquence. His calm demeanor contrasts with the vibrant energy of his creations, which showcase his profound creative spirit. Kenneth Arts showcases the power of embracing individuality through art. His journey inspires an appreciation for diverse perspectives and the universal language of creativity. His illustrations remind us of art’s ability to unite hearts and minds, conveying the world’s beauty through a truly extraordinary artist’s lens.

jennifer_suet@yahoo.com.sg



Muscular Dystrophy Association (Singapore), MDAS, is a social service agency formed in March 2000 to support persons with Muscular Dystrophy (MD) and their families facing the life-threatening effects of neuromuscular conditions. MDAS is committed to uplifting the lives of persons with MD and enhance the quality of life for them and their families. The Creative Chair (TCC), a social enterprise branding of MDAS provides an official platform to showcase the works of persons with MD and to create greater awareness of their creative abilities. TCC hopes to provide them with more opportunities for gainful freelance employment.

contact@mdas.org.sg



Founded in 1962, MINDS is one of the largest and oldest Social Service Agency (SSA) in Singapore serving some 2,400 persons with intellectual disability. MINDS Craft began as a therapy programme geared to developing fine motor skills and self-confidence amongst trainees who enjoy art. Through the programme, trainees develop their creativity and express themselves through different art forms. MINDS Craft is growing from a therapy programme to a sustainable social enterprise committed to delivering quality products through meaningful work engagement and dedicated training.

szekeat.tang@minds.org.sg



Initiated by the Metta Welfare Association in 2007, Arts@Metta aims to equip special needs youths with life skills that promote integration, independence and employment. Special needs youths develop their mastery of visual arts in a creative and inclusive environment, paving avenues for self-expression and personal development. These youths with higher needs are unable to seek open employment. By leveraging on commissioned projects and retail sales of their artwork, the youths are empowered with hope and dignity with sheltered employment.

mictan@metta.org.sg



Initiated by Metta Welfare Association, Metta Café was set up to provide F&B vocational training for Metta School graduates aged 18 and above, with mild intellectual disability and/or autism. Our mission is to provide an avenue for these youths to acquire vocational, work and life skills through our comprehensive training and development programmes. To create employment opportunities to help them achieve economic independence, self-reliance and build confidence. Our cookies are made with love by bakers of Metta Cafe. With every bite, you are supporting individuals with special needs and promoting inclusion in the community!

yenyen@metta.org.sg



Serving people with disabilities since 1964

SPD is a local charity set up to help people with disabilities of all ages to maximise their potential and integrate them into mainstream society. SPD's Bookbindery has been providing employment opportunities and training for persons with disabilities since 1964 under the Sheltered Workshop programme. Craftspeople with disabilities hone specialised book-making and restoration skills in this programme. Each craftsperson brings a unique skillset to the team, producing artisanal journals and restoring old books, giving them new leases of life.

li_min_qi@spd.org.sg



Social Gifting is a not-for-profit social enterprise registered under raiSE. It is supported by NorthWest CDC, founded and spearheaded by SUSS students. Social Gifting provides free crafting sessions and materials to co-create exquisite handmade gifts with persons with disabilities, warriors with illness and seniors, empowering them to build on their strengths and enabling them to live an enriching life with dignity. Social Gifting empowers their makers by training and supporting them in product creation and in turn enabling them to earn a passive income.

valen@sgifting.com



Singapore Fashion Runway is a social enterprise that nurtures people with special needs and disadvantaged groups through its Fashion for a Social Cause movement. Families with special needs/ caregivers as well as the disadvantaged groups develop their talents in Creative Arts, Performing Arts and/or grow their passion for fashion and design through the movement.

welovesfr@gmail.com



ArtSE was established in 2018 and is a local social enterprise based in Singapore and a non-profit grounds up volunteer group that supports and empowers various vulnerable and disadvantaged groups. Our curated collection of UNESCO-recognised state-level gift Longquan Celadon combined with eco- friendly gift packaging, we promote sustainability. We also create employment opportunities to our local marginalised communities to be part of the value-creation process.

galvin.choo@savh.org.sg



Chalmers is a young artist living with Autism who is talented in acrylic painting. His art pieces span across various themes including, landscapes, animals, architecture, flowers and even portraits. His beautiful art pieces are usually sold out quickly and recently they have even helped to raise funds through an art auction for the Mediacorp Enable Fund. Besides his love for art, Chalmers is also a drummer, pianist and a bowling champion who has won in the Singapore National Games back in 2016, 2018 and 2019.

specialthots7711@gmail.com



TeddyThotz is where creativity and social enterprise merge and everything is handmade and homemade. Where championing the talents of the elderly, poor, disadvantaged, single mums, crafters and indie designers and generating income for them is our everyday mission. Where you can always find a truly wonderful gift and help someone at the same time.

jongoh@teddythotz.com



The Shy Crafter was created by Shylyn, a mother of 4, who was inspired by her second child, Isaac (youth with Autism Spectrum Disorder), while facilitating him to alleviate his sensory disturbances with clay moulding.

Both mother & son work with polymer clay - with Shylyn crafting miniature food, florals and pet figurines, turning them into accessories or wearables; and Isaac making dinosaur & animal figures.

tianchenzy26@gmail.com



Wesley developed a rare condition of glaucoma at 35, which resulted in him losing sight in his right eye and having less than 40% vision field with his left. However, Wesley did not allow his visual impairment to hold him back from learning the art of Chinese calligraphy and ink painting. Through training courses and self-learning, he was able to express himself using different strokes, intensity, and by incorporating Chinese colour pigments and acrylic paint into his art pieces. Having some of his art pieces sold and gifted to Ministers in Singapore is truly a testament to the quality of Wesley's artwork. He strongly believes that "[He] may be disabled, but [he is] enabled differently".

wesley.seah@artsofvisuallyimpaired.asia

